



THE SOCIETY PAGE

Website: www.20-30-40glassociety.org

Volume 37 Issue 3

May – June, 2016

NEXT MEETING

When:

June 18, 2016

Where:

**White Fence Farm
1376 Joliet Rd.
Romeoville, IL 60446**

Agenda:

4:00 p.m. Social Hour

Business Meeting

5:00 p.m. Dinner

Program

Adjournment

Cost: See Reservations

Deadline is June 5th

Mail Today!

Inside this issue:

PRESIDENT'S 1-2

VICE-PRESIDENTS' CORNER 1-2

April Recap 3-7

Before, After & During the SHOW 8-9

Show Report 10

Looking to the Future 11

RESERVATION FORM

President's Comments...



Welcome to spring, as I write this it is 75 degrees; I hope spring is really here.

Welcome to our new members. We always have educational programs, along with an exceptional collection of reference books in our library, to say nothing about "eat in style" meetings where everyone brings their Depression era dishes to eat on and your favorite recipe to share for the potluck table. I'm also happy to report that all our members enjoy socializing during hour Social Hour which begins at 10:30 a.m. Again welcome, I'm sure you will enjoy chatting about GLASS.

Barbara Miller did a fantastic presentation on her Paperweights; she had a variety of different kinds, some of which were her mothers. I sure learned more about paperweights, history and information more than I had ever heard before. Thanks Barbara. It was also fun hearing and seeing the paperweights that many members brought to share. Thanks everyone.

Lana Larsen was scheduled to share her Moonstone collection, but her brother passed away during the week. Nancy Lazaris stepped right up with presenting her Moonstone. Thanks Nancy, for an awesome display of Moonstone. We all send our condolences to Lana Larson and family.

Our June meeting is LUNCH/DINNER at White Fence Farm. Hope you can all

(Continued on page 2)

Vice-President's Corner ...

Spring is finally here, but it seems that it's only on the calendar, if you consider our recent weather. However, it was spring at our April meeting with lovely flowers and place settings.

If you missed our meeting, you missed a great display of paperweights. Barbara Miller led the group with history and information about the making of paperweights and her display of her beautiful paperweights. Eddie and Neil Unger showed older Degenhart paperweights and explained the history of this company. Sally Cousineau had many St. Clair paperweights as well as table lamps, a floor lamp, and an ashtray stand using St. Clair's paperweight style. Other presenters include Rose Roth, Nancy Lazaris, Joyce Rezmer, and Jackie Alton. Ken Pakula even had several lovely paperweights available for our raffle prizes! Great job, Ken.

The second part of our program was "Moonstone." Lana Larsen was scheduled for this presentation, but was unable to do so due to the death of her brother the week prior to our meeting. (Our condolences to Lana and her family). Nancy Lazaris filled in for Lana with a presentation of her "Moonstone." While Nancy showed many items during her presentation, she also provided lovely place settings of the Moonstone for those members seated at her table. It was a very impressive setting and our thanks to her for providing these lovely settings.

My thanks to all of our presenters at this meeting. They provided wonderful items

(Continued on page 2)

President's Comments...

make this meeting. A fantastic program is planned. See RESERVATION FORM on another page.

June and July are the months for the NATIONAL GLASS SHOWS. Bette Wittenberg always WELCOMES articles to be written for **your NEWSLETTER**. I always want to hear what's going on in during convention and with other clubs, as I'm sure everyone else likes keeping up to date. PLEASE WRITE YOUR ARTICLE – share your knowledge and slant on today's collections and collectors.

Rose Roth, President.



A Message from "The" Prize Guy

The June program relies on everyone bringing and sharing their favorite **blue and/or purple glass**.

I just told Jackie A. that I'd be willing to be the member to break the ice by showing my amethyst stretch glass. It's only a small collection of about a dozen pieces. Now, if everyone brings only 10 or 12 pieces of their favorite blue/purple glass we'll have a super program.

Between now and then meeting I'll do my very best to find some cool raffle prizes which can compliment this program.

See you then, Ken Pakula



Vice-President's Corner ..

for our viewing pleasure as well as a lot of information to increase our knowledge. It was a most enjoyable afternoon.

More details on the items can be found in Bev Kennett's minutes of the meeting. Bev does a great job in capturing all of the details.

Our **June meeting**, as usual, will be at an outside location. This year, we will be meeting on Saturday, June 18, at **White Fence Farm in Romeoville, IL, beginning at 4:00 p.m. with our Social Hour and Meeting, followed by Dinner at 5:00 p.m.** Advance reservations are required and a reservation form is included with this issue of *The Society Page*. **The deadline for reservations is June 5.**

Our program will be based on colors – **Blues and Purples, including various shades of each**. To start things off, Ken Pakula will present a program on "Purple Stretch Glass." So, bring any type of items in your collections that are any shade of blue and/or purple. Although we don't need place settings for our meal, if you wish, you may bring place settings to show.

Once again we will have our usual raffle, so don't forget to bring a few extra dollars for the purchase of raffle tickets. Ken Pakula will be shopping for just the right prizes, and he always does a great job finding some wonderful glass items for some lucky people to take home. I just know he'll find something to pique your interest, possibly some things in keeping with our color theme.

Eddie and Neil Unger will help identify your mystery pieces during our, "What's It?" segment of the meeting.

Want to clear out duplicates, or items you no longer want or need? Bring one item per member to place on our "For Sale or Trade" table. Perhaps a member will find a new home for this item. Also, check out the items that are brought that might make great additions to your collections.



I also wish to thank the many members who helped me with the food service duties at the meeting. Your help is greatly appreciated!

Jackie Alton, Vice President

KITCHEN NEWS!

If anyone is missing utensils left in the kitchen at the April 9th meeting, please let me know. I will bring it to the June meeting. I found a cheese spreader with a white handle and decorative blue band, a butter knife (this maybe a society utensil) and a serving spoon.



Thanks, Jackie Alton

Recap April 9th Meeting

Business Meeting: Rose Roth called the meeting to order at 11:08 a.m.

Rose asked for a motion to approve the secretary's minutes, posted in the last newsletter. Halla Kotlarz motioned to accept the minutes and Nancy Lazaris provided a second.

The club welcomed new member, Joanne Donovan. She has enjoyed shopping at our collector's markets and March Show for several years. Joanne claims she doesn't really collect, but we all know that is rarely true. She admitted to having a fondness for Imperial's Candlewick pattern and I personally know she has a collection of Petal pieces.

The following announcements were made . . .

- Lana Larsen had surgery recently and her brother also passed away. Lana was scheduled to present today, but Nancy Lazaris graciously offered to fill in for Lana.
- Nancy Lazaris suggested that at our October meeting, every member bring at least 10 addresses of people we can invite to the March Show. She believes that since the cards we mail out seem to be the best draw for customers, if we take a few minutes at the meeting to address advertising cards, we might be able to increase our attendance at the Show. Nancy will add a note about the idea in the newsletter.
- Neil reminded us that the bus trip has been cancelled due to a lack of participants.

Vice President's Report: Jackie Alton announced that the June meeting would be held at White Fence Farm in Romeoville on Saturday, June 18th at 4:00. The program will have several presenters sharing their glass made of differing shades of blue and purple.

COMMITTEE REPORTS:

Treasurer's Report: Bette Bruce reported that the general fund included receipts of \$7,287 and disbursements of \$12,279.74, leaving a balance of \$5,038.95 in the general fund. Other balances were reported, as well.

Membership: Sally Cousineau reported that in addition to our new member, Joanne Donovan, the club had a few members rejoin, including Christine Moran, Keith Anderson, and Sally Suzuki.

March Show and Sale: John Schleinzer was not present, so Bette Bruce gave the report. She thanked the Stretch Glass Society for providing such a nice display. Bette says that many people commented on liking the display, citing that they previously had not seen this style of glass. This was a good example of our club's mission to educate the public about the glass we love.

The 2017 Show has been booked for the same venue at Concord Place, but it was suggested again that we continue to look for a new venue that might be more economical. Jackie Alton will contact some free community websites for advertising, as well.

Bette also took suggestions for next year's display. The ideas included: dresser sets with lamps, red/white/and blue, covered candy containers, or pieces decorated with gold or silver trim.

Acquisition and Preservation- Ken Pakula has no report.

Collector's Market: Alice Ewert reported the Collector's Market tables were not fully rented in April for a variety of unforeseen reasons. In spite of this, there was a steady stream of customers throughout the day.

Alice reminded us, again, that she would be retiring from the post of Collector's Market chairperson; so if you are interested, please consider volunteering. Of course, Alice will help you learn the job. Contact her to find out the details of the responsibilities.

(Continued on page 5)



Sally Cousineau added St. Clair Lamps and more to the program

April Meeting Highlights



Barb Miller presented a great program on paperweights.



Nancy Lazaris presented her Moonstone ... what a lovely pattern.



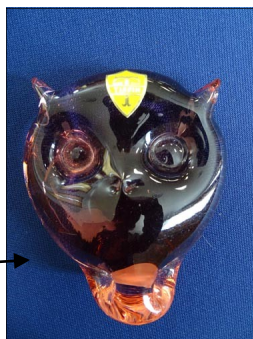
Eddie Unger added her expertise to the



Karen and Jay Smit added to the program.

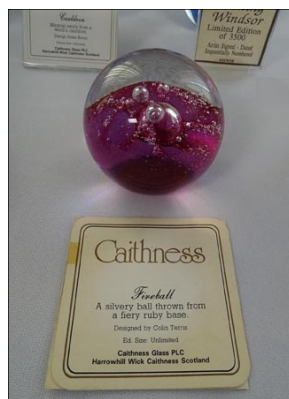


Tiffin Owl paperweight





David, Jeanne & Eddie are serious about ????



Photography
by Neil Unger



Can YOU name everyone
in the picture ?

Hospitality Committee:

Librarian: Nancy Lazaris made an announcement that if you have library books to return, please make an effort to return them in person. She showed us a box in which a book had been returned through Federal Express and the box had been completely destroyed, damaging the book inside.

Old Business:

New business: none

President's report: none

Jeanne Lehner motioned to close the meeting at 11:40 and Alice Ewert seconded.

Raffle: Jim Crossen, our raffle ticket salesman, was not in attendance at the meeting, so we auctioned the prizes instead. Jim Larsen served as our auctioneer and the following prizes were won by . . .

Large paperweight– Jackie Alton

Large paperweight–Alice Ewert

Large paperweight–Bev Popp

Pair of Joe Rice signed small paperweights – Kris Kammerer

Souvenir paperweight– Judy Clouston

Paden City decorated console set with crow's feet – Christina Rowinski

Fenton silver crest vase with pink interior – Lana Larsen

FYI The auction raised just slightly less funds than our raffle usually does.

Presentation #1 – Barb Miller presented a wide array of paperweights. Her collection began as many do, when she and her brother inherited their mother's collection. Barb admitted to doing some research before she presented her collection, she claims she didn't know very much about her mother's collection at first. Three years ago, Barb learned a great deal about her paperweights when she visited an Art Institute Exhibit about LH Selman. He was a chemist, who branched out into making glass paperweights. Eventually, he left his chemistry career to focus solely on the paperweights. There are currently price guides devoted to Selman paperweights.

Through her research, Barb informed us that the most expensive paperweight sold for a record-breaking price of \$250,000 at a Sotheby's auction. It was an antique millefiori paperweight. Millefiori is the style name used for colored glass canes that are joined together in decorative ways and encased inside another piece of glass. Some of these were produced as small inexpensive souvenirs meant to draw tourists. Barb showed us examples in her collection from 6 different countries: Scotland, The USA, Bohemia, Austria, China and Czechoslovakia.

In the 1970's it was popular to encase straw flowers inside Lucite paperweights. These were often made in California. Barb had an egg-shaped paperweight decorated with ash from the Mount St. Helen's volcanic eruption. Others were produced with a "lampwork" technique, Eau Claire examples. Like Eau Claire lamps they were manufactured by first, forming glass flowers and then encasing the flowers in glass. The tall knob on a teapot-shaped Eau Claire piece serves as a ring holder.

Barb learned that there were three types of decorated glass paperweights, the millefiori, the lampwork, and sulfides. Sulfide paperweights are formed with a clay paste that creates a cameo deep in the glass.

Barb's research turned to studying one piece that had a picture of a ship underneath the glass. The ship's name was visible, so after a little "googling," Barb learned that the picture is a portion of a larger painting. So in addition to all she has learned about the process of making paperweights, she also learned some history. She also learned about another maker, John Gentile. Born in Italy, he was trained as a glass blower at 17 years old and worked for the Fry Company for 10 years. Afterwards, he built his own paperweight company, where his wife used an ice-pick-type tool to create stems on the paperweight. The company closed in 2006, six months after John passed away. The family's personal collection of paperweights was housed and on display in the family's home and it became the Bergstrom-Mahler Paperweight Museum in Neenah, WI.

Other club members shared their pieces, as well. Nancy Lazaris, of course, had glass apple paperweights, that she received as teacher gifts. She shared one that was in the shape of a Christmas tree. It came to her from an aunt who never put up a Christmas tree, but used this small paperweight to decorate. One of Nancy's most prized one came from a dear family friend. She admitted to knowing little about it, but the connection to childhood memories holds a special place in Nancy's heart.

Rose Roth claims her collection started at the House of Glass in Elwood, IN. She explained how those marked Joe Rice were made by St. Claire's nephew. He has since changed his focus to making glass marbles. Some of Rose's favorites are those with pictures of some Native American Chiefs faces on them.

Sally Cousineau shared Eau Claire paperweights that match her Eau Claire lamps. Her first purchase was also from the Elwood Museum. She says several of them were purchased on the club bus trips. An interesting note is that the ashtray examples she shared were produced in the Europe, although the glass was made in the U.S.

Jackie showed us her Tiffin Byzantine paperweight where the pattern is upside down. Of course, Jackie also had many paperweights with cats inside them, including a Tiffin cat face paperweight.

To finish out our large collection of paperweight collectors, Neil and Eddie Unger shared their Degenhart examples. The story of these weights began with John and Charles Degenhart, who began working at Dalzell when they were seven and nine years old. Times were difficult for their family, so they went to work to help out. Later they worked at the Cambridge Glass Company. Charles started making paperweights and his brother John joined him after a while. They had worked out an agreement with the Cambridge owners, where the brothers used Cambridge glass and tools to make their paperweights, paying the Company for the use of the supplies. Later John opened his own company. The

(Continued on page 7)

two brothers branched out into making headstone decorations, with the name of the departed added on a flat piece of glass called a cookie and adhered to a glass ball.

The Degenhart Company also made perfume bottles with controlled bubbles, flower stoppers and gear-shift knobs with the owner's names on them. Typically, Neil and Edie disagreed over which Degenhart pieces are the most valuable. Edie believes the rose and butterfly ones are the most valuable ones because they are so popular, while Neil believes the Chicago City Bank advertising one with the "O" missing from the word "Chicago" is the most valuable. To identify Degenhart glass, look for a heart and a "D" mark. One thing to note is that Degenhart roses have four petals and the flowers in Eau Claire pieces have five petals. There is a theory that the five petals in Eau Claire's flowers represent his five sons.

Presentation #2 - Since Lana Larsen wasn't able to present at the meeting, Nancy Lazaris filled in with her collection of Anchor Hocking Moonstone. The collection started with a divided relish that belonged to Nancy's mom. The funny part about this piece was that Nancy's mom donated it for a fundraising auction. Later Nancy's sister was shopping and saw the piece in a box full of items. The relish dish still had a tag on it with Nancy's mother's name, so she bought it back. Nancy has collected a wide variety of pieces in this pattern including candlesticks, a heart-shaped candy dish, vases, a cigarette box, a round puff box, and many examples of plates, bowls and other serving pieces.

What's It Table?

Neil, Eddie, and Ken acted as our resident experts again at "What's It Table." A Waterford shoe, bought for \$3, a etched Heisey sugar cube holder, and a 3-lite Cambridge candlestick were some of the nicer things we could identify. There was also a Victorian double salt cellar with a center handle, an Anchor Hocking set of pitcher and glasses with apple decals, and an amber oval creamer and sugar tray, possibly made by Indiana Glass.



Respectfully Submitted, Bev Kennett

MEMBERSHIP

The 2014-15 Membership Directories are still available — pick up your copy at the next meeting.

If you can't attend the June meeting, you can obtain a copy by mail...the cost of mailing is \$4.00, which doesn't fully cover the total cost (first class postage and padded envelope). Mail your check and request for a directory to: The 20-30-40 Glass Society, Attn: Directory, P. O. Box 856, La Grange, IL. 60525

Memberships	2016
Family Memberships	41
Single Memberships	52
Lifetime Memberships	2
Total Memberships	95

Welcome to our new members: Eleanor Banasek
Joanne Donovan
Nadine Anne McChesney
Linda Nordin

We hope you will be able to attend the June Dinner meeting—please introduce yourselves to our membership secretaries.

See you in June, Sally Cousineau and Cynthia Stark

Before During & After The Show

I'm scheduled to work floor time at the Roscoe Antique Mall of South Beloit this afternoon. I like the Friday 1:30PM to close shift and therefore sign up for the time slot as often as I can, usually three times each month. Before heading north, I need to refuel the Caravan and go to an estate sale which is nearly in my neighborhood. The facilitator is "Salvaged by Sonya" a relatively new player in the estate sale game.

ESTATE SALE TODAY

I did the estate sale. Well, I did the main floor only, not the basement and not the garage. With one quick look at the big-box-store-merchandise for sale, I figured I probably wouldn't find any find in the other parts of the house either. In defense of Sonya everything was clean and well presented. In fact, I heard one happy shopper comment something like "this stuff doesn't look like it was ever used." I'd guess she was probably right on target.

I need to take a moment to thank the Schleinzers and my daughter, Kris, for helping me participate in the "big show" once again. John and Jane provided table covers and risers for the display and daughter Jessica to share booth space. Kris, as usual, helps as driver, set-up, and teardown slave and Facebook expert. I don't know what the head count for the show was, but traffic seemed slow but steady on both days. We seem to have developed a knack for scheduling our "BIG SHOW" and Collector's Markets on really great first-of-spring and last-of-fall weekends. The grapevine informed me that a general interest antique show held in the Madison, WI area also experienced light turnout that same weekend.



I feel bad for those shoppers who didn't show up to shop. Shopping was great. Just ask Jackie Alton if she found any crackle glass. I scoped out more than my share of night sets and tumble-ups throughout the venue. Unfortunately for those dealers, I also found in the booth next door, L & M Glassware, some green American Pioneer, which I really, really, needed. I invested more than my entire budget on both the "Pioneer" syrup and batter pitchers complete with covers. Sorry tumble-up dealers.

Now, let's step back to the Friday, set-up day, just before the show and sale. My daughter and I arrived reasonably early (for us), spent a few hours setting up, visiting a little, and recruiting Helen & Bob Jones to help Jeanne Lehner identify a selection of "Vida Amber #6102" made by Monongah Glassware Co. And all the while the slave kept asking if it was time to go yet. No, she didn't want to go directly home, she wanted to see how many antique shops we could find between Northlake and Rockford.



The usual starting point is almost always Oakton Street mall in Elk Grove. Good fortune manifested itself in the form of a red, 11" wide, Imperial Glass Company, stretch glass comport identified as carnival glass, but moderately priced. I also found an unusual cork carving for my friends, the Andersons. Remember this all happened before I blew my budget on the American Pioneer, so yes, I "had to" and "did" buy both pieces.

Our next stops were at the two shops I know of in Crystal Lake. We followed US14 out of town, but because of road construction missed the turn-off to Ridgefield and finally ended our shopping day at Colonial Antique Mall in Woodstock. My two purchases included an EAPG tumbler in the "Massachusetts" pattern for my collection and a "Doric" (Feather) water pitcher for resale.

The next week was pretty much a big long blur including a session with my tax guy, a trip to Peru, IL, breakfast and pool with some old (both old and longtime) buddies, a stop at Carousel Consignments in Janesville, WI, more floor time and the semi-annual Lions Club Draw Down in La Moille, IL.



It was a good busy week. I have a good tax guy, I get a refund. I also had a significant sale at the Peru Antique Mall. Curiously enough, based on my conversation with the mall person who rang up that significant sale there is an almost 100% certainty the the sale was made to the Oregon people who sold me the "American Pioneer".

At Carousel Consignments, I found and once again, had to buy a green with gold sugar, creamer, and spoon holder in the EAPG "Seed Pod" pattern made in Wellsburg, WV by Riverside Glass Works, circa 1898. While examining my "Seed Pod" find, Joni, shop co-owner said "Ken, Larry (the other co-owner) just unpacked another set of "your kind of glass" and found a hand written note stating that set is one of only two sets known to exist in the world." From across the room, I could see that the pattern was "Delaware" made by U.S. Glass Co., so I just smiled and Joni threw the note away. (I checked my reference books later that day, "Delaware" was made from 1899 until about 1909)

Every day well, sometimes, maybe once in a while, well I can't remember when, but it has occurred to me to pray that the Lord removes this curse from me which compels me to keep shopping for glass. But then what would I have to write about?



Until next time, happy junkin'

Ken Pakula & Kristine Kammerer

Estate Sales In Sarasota are fun and therapy.... Here are two of OUR latest 'FINDS'



Art Deco and Asian influences dominate the estate sales this month. High end Asian furniture from the 70's at high prices are being offered. Prices are rising in glassware and silverware as the Estate dealers become more educated. "FINDS" are becoming few and far between.

I am not able to ID this lovely nymph flower arranger in pottery.

The Westmoreland Crystal Ivy Rings along with their sales pamphlet is from 50's was a terrific find.



W

WESTMORELAND IVY RINGS have a wide variety of decorative uses. Nested they make a lovely low centerpiece for the dining table. They provide a unique method for displaying short-stem flowers all about the house. Ivy rings are frequently placed on mirrors to create an illusion of depth and to give an added touch of charm. Candlesticks, an odd figurine or a small vase when encircled by the larger ring will provide more variations. They make a cheerful holly wreath for table or living room and will keep holly leaves and berries bright.

WESTMORELAND GLASS COMPANY
GRAPEVILLE, PENNA.



Bette Wittenberg

**ESTATE
SALE
TODAY**

2016 SHOW REPORT

20-30-40 Society Glass Show March 12 and 13, 2016 is in the books. We had fabulous dealers coming from as far as Oregon, Nevada, Virginia, and North Carolina, and everywhere in between. The quality of glass in this show is second to none!

This year we were able to let the dealers unload on Thursday. This is the fourth year we've been able to do this. The dealers do appreciate getting in a day early.

The show opened at 10:00 AM Saturday. We were happy to see the bus pull up with members of the Depression Era Glass Society of Wisconsin. It was nice to see many long time friends on that bus. Their show will be on October 15 and 16, 2016 in Milwaukee, WI.



We heard from the attendees they loved the club display. The glass that the Stretch Society provided was great to see. Many thanks goes to Bob and Helen Jones and the Stretch Glass Society for bringing all that great glass. Our club members were not to be outdone and brought many wonderful pieces of stretch glass also. It's amazing the caliber of glass our club members have. Bob and Helen commented how happy they were that we added to their display. They said no other show had done that.

We understand that the club id booth was once again very busy all weekend long. What a good job Nancy Lazaris and David Taylor do putting that all together. This year we had the new Membership Secretary Sally Cousineau working with Jeanne Lehner at the door. One of our helpers is never seen by our members, dealers or customers. We can not thank David Stark enough!!! He is an over night guard for us every year. This saves the club a lot of money and takes a lot of pressure off of me.



The raffle winner was picked late Sunday afternoon. The winner was our very own Librarian David Taylor. We must thank David for donating the set of Iris back to the club to be used again for the raffle in future years. He is so generous to do this.

There are two people that give us so much support. Rose Roth and Bette Bruce deserve a special thank you for everything they do. Much of what they do is behind the scenes and no one ever sees what they do for the show. Next time you see them, please give them your thanks.

This show wouldn't be the show it is without the club members and everything they do. We want to thank all of the members that donated their time to make this show a success.

I'm all ready working on making next year's show even better. But I can't do it without you. When we start asking for volunteer's, please be sure to sign up.

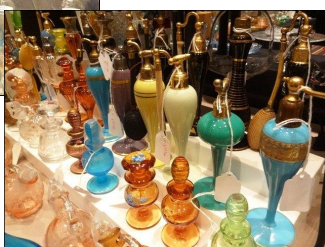
John Schleinzer





More Show Pictures

Show Pictures by
Neil Unger & John
Schleinzer



An empty chair, you
should have been
there

A BIG Thank You



This year's Glass Show Booth display was Stretch Glass. The Stretch Glass Society brought 100 pieces of stretch glass to share with the show participants and to promote stretch glass's 100th anniversary of being made. Also a few of our members brought some Stretch Glass pieces from their collections for our club display. The rainbow of colors of items was very attractive and many commented on the range of colors that were produced in stretch glass. Many visitors to the show also commented that the displays were very interesting and beautiful. Also, many had never heard of stretch glass and found the display to be very educational.

A very big THANK YOU to the members who either lent their stretch glass for viewing and to Jackie Alton for helping set-up and pack up the display. Also thank you to Loretta Shoppe for her help in packing up the display. A thank you also for those who volunteered their time to answer questions in the booth during the show: I want to especially thank David Stark for help in transporting supplies between the locker and display hall.

I am now looking for ideas for next year's display booth at the 2017 glass show. If you have any ideas please share them with me for consideration.

Bette Bruce Club Display Booth Chairman



LOOKING TO THE FUTURE

Our attendance numbers for the show on March 12-13, 2016 were way down from prior years. The majority of people coming to the show brought in a discount flyer/postcard with them. Only one person mentioned the television advertisement. We will not be doing another TV advertisement since it did not produce good results. One person printed a coupon from our web site and one person brought in an ad from a newspaper.

For the 2016 Show, I sent several postcards with a personal note to friends of mine. This personal advertisement got 7 guests, who had never been to our show, to attend. A few others said they wanted to attend but couldn't this year. In thinking about it, I thought that if every member would send out at least 10 postcards to friends, neighbors and relatives, with a personal note on the front of the card, we might get more people interested in attending the show. I proposed this at our February meeting and many people thought it sounded like a good idea. Therefore, at our October meeting, we would like all members to bring a listing of as many names and addresses as possible. We will have a time for you to address the postcards during the meeting. The show committee will collect the postcards, attach postage and mail them in January.

Any member who can't attend the meeting, please send or email your list of friends, relatives, etc. to me. My address is as follows:

Nancy Lazaris or Email: Nanlaz7@yahoo.com
5852 N. Bernard St.
Chicago, IL 60659

I will see that everyone on your list gets a postcard with your name on it.

Thank you, Nancy Lazaris

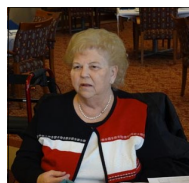


LIBRARY NEWS

The following is a summary from the library / ID Booth at the Show in March.

Number of People	56
Library Books Utilized	152
Number of items brought in for ID	65
Identification Made	39
No Identification	23
Possibly ID—further id needed	3

Your Librarians at work—along with many helpful volunteers.



Nancy Lazaris and David Taylor Librarians



SOCIETY CALENDAR 2016

June 18th.....White Fence Farm, 4:00 p.m.
August 20American Legion Hall
October 15....American Legion Hall
November 6 Collectors' Market, Legion Hall
December TBA..... Restaurant

BOARD MEETING 2016 CALENDAR

Location:
 Papa Passero's Restaurant
 10:00 a.m.

May 14
 September 17
 October 29



WEBSITES WORTH VISITING....

Imperial
 Heisey
 Duncan Miller
 Fostoria
 Fostoria
 Autumn Leaf
 Old Morgantown
 Cambridge
 Nat'l Depression Glass
 Stretch Glass
 Vaseline Glass
 West Virginia Museum
 Nat'l American Glass
 Tiffin
 Just Glass
 Kovels' online price guide
 Antiques around Florida
 Akro-Agate
 Nat'l Milk Glass Collectors
 Westmoreland Glass
 Nat'l Assn. Of Collectors
 Glass Encyclopedia
 Mega Mall
 Carnival Glass
 Charleton Line by AWCO
 Corning Museum of Glass
 Historical Glass Museum
 Early American Pattern Glass
 Ohio Glass Museum
 News-antiques newsletter

Imperialglass.org
 Heiseymuseum.org
 duncanmiller.net
 Fostoriaglass.org
 Fostoriacollectors.org
 nalcc.org
 Oldmorgantown.org
 Cambridgeglass.org
 NDGA.net
 Stretchglassociety.org
 vaselineglass.org
 wvmag.bglances.com
 glassclub.org
 Tiffinglass.org
 justglass-online.com
 Kovels.com
 aarf.com
 Akro-agate.com
 NMGCS.org
 Westmorelandglassclubs.org
 Collectors.org
 glassencyclopedia.com
 glassshow.com
 carnivalglass.org
 glasshousenc.com
 cmog.org
 historicalglassmuseum.com
 Eapgs.org
 Ohioglassmuseum.org
 news-antique.com

Indiana Glass Society
 On-line Shopping
 Nat'l Aladdin Collectors
 J. W. Courtier Aladdin News
 Wheaton Arts & Cultural Ctr.
 Chicago Antique Guide
 Viking
 Pattern Glass
 Art Deco
 Crescent City DG Society
 Nat'l American Glass Club
 Ruby Stain Pressed Glass
 Antique Shops in IL, IN, MI
 Patterns
 Art Institute of Chicago
 L.H. Selman—paperweights
 Bergstrom Mahler Museum
 Morgantown
 Paperweights

indianaglasssociety.org
 Antiques-internet.com
 Aladdincollectors.org
 Aladdinknights.org
 wheatonarts.org
 Chicagoantiquesguide.com
 Vikingartglass.com
 Patternglass.com
 Chicagoartdecosociety.com
 crescentcityglass.org
 glassclub.org
 rubystain.com/book7.html
 Antiquesshopsinindiana.com
 patternsofthepast.com
 artic.edu
 theglassgallery.com
 bmmglass.com
 morgantownglassmuseum.com
 caithnessglass.co.uk

Note: If any of the above site addresses are incorrect, please let us know.

If you know of any other sites that would be of interest to glass and pottery collectors, please let us know.

Email: 20-30-40glassociety@comcast.net



The **20-30-40 Glass Society of Illinois** incorporated May 20, 2005 and granted Internal Revenue's 501 (c) 7 "Not for Profit" status. The opinions expressed in articles in the **Society Page** are the authors and not necessarily those of the **Society**. The Editorial Staff reserves the right to edit, with or without the consent of the author or to refuse any material submitted for publication.

© 2016 20-30-40 Glass Society of Illinois—All rights reserved.

Newsletter deadline for the July—August, 2016 newsletter is July 1st.

Important
Message


Editor's Notes

In reading several national glass clubs' newsletters I find we all have the same dilemma—we can't get enough new members and our current members are not volunteering.

While reading **President Cal Hackman's** column in the **Stretch Glass Society's Quarterly** I had to copy down his last paragraph. Sorry Cal, I had to plagiarized it, as the content fit OUR SOCIETY— Here goes

I encourage you to think about how you could contribute to the success of the **20-30-40 Glass Society** by volunteering to become a Director or Officer in 2017. New ideas and new energy are the lifeblood of all organizations. Your ideas and your energy are just what the **20-30-40 Glass Society** needs to continue to promote Depression Era Glass as one of America's most unique and interesting collectibles. Above all, to preserve our American glassware heritage.

Please feel free to talk with any of our current directors or committee chairpersons to learn about their rewarding experience and how little time it takes to make a contribution. Bette Wittenberg



27th ANNUAL
INTERNATIONAL
**ANTIQU
LAMP
SHOW
&
SALE**
Crowne Plaza Hotel
Louisville, Kentucky
July 29-30, 2016
PUBLIC INVITED
Friday July 29th - 2:00 to 6:00 P.M.
Sat. July 30th - 9:00 A.M. to 3:00 P.M.
BUY - SELL - TRADE
Admission \$5.00
INFORMATION: Jim Wright 803-232-0678
or Tom Small 814-279-7448
Sponsored by: National Association of Aladdin Lamp Collectors, Inc. www.aladdincollectors.org



Friends
Gather in
Kentucky
Louisville
44th Gathering
July 24 - 31, 2016
www.aladdincollectors.org
Gathering of Aladdin Knights

LOOKING FORWARD TO: *2016 Conventions* *Notes / Dates*

MAY **Western Reserve American Glass Club**, Cleveland OH
Valley Glasshoppers Spring Show, Winchester, VA (540) 622-4921

JUNE **National Heisey Collectors of America, National Westmoreland Glass Society, Cambridge Annual Convention, Fostoria Glass Society Convention**
Belleville Glass & Pottery Show, Belleville, IL (314)750-2907

JULY **Aladdin Knights—Aladdinize Nashville—43rd Gathering** Nashville, TN contact Bill Courter, NAALC, 550 Pioneer Ln., Calvert City, KY 42029

Stretch Glass Society Convention—Stretching over 100 Years: a century of handmade stretch glass In America, Marietta, Ohio

National Depression Glass Association; National Fenton Glass Society Convention

AUGUST **Houston Glass Club Show**, Texas; **Grapevine Looking Glass Show**, Texas

Pensacola, FL. Looking Glass Show, Sidell, LA. Looking Glass Show -www.meyershows.com



National Cambridge Collectors Inc

presents the

42nd Annual NCC Convention Show & Sale June 24-25, 2016

at
Pritchard Laughlin Civic Center
Cambridge OH 43725

Friday June 24
1 pm - 5 pm

Saturday June 25
10:30 am - 4 pm

Admission \$5 - good both days

Featuring glassware made by Cambridge,
Fostoria, Heisey, Duncan, Imperial, Tiffin,
Morgantown, and other fine glassware

Glass Dash Saturday June 25

7am Early Bird
Admission \$10

8:30am General
Admission \$4

St Benedict's Gym
233 N 7th Street
Cambridge OH



While in town, don't
forget to visit the
National Museum of
Cambridge Glass
136 S 9th Street
Cambridge OH
740-432-4245



www.cambridgeglass.org for more info



National Depression Glass Association, Inc.



42nd Annual Convention

GLASS SHOW & SALE

Hosted by Tiffin Glass Collectors Club

"Tiffin is Forever"

Saturday July 16th, 2016 10am - 5pm

Sunday July 17th, 2016 11am - 4pm

Heminger Center
Tiffin University
155 Miami Street
Tiffin, Ohio



32 National Dealers
Educational Seminars & Displays
Glass Identification
Live & Silent Auctions
Hourly Door Prize Drawings
Admission: \$8 (Good Both Days)



Information: Tom Maiberger - 419-618-5036 - tmaiberger54@yahoo.com
Jack Peacock - 336-785-5224 - pfau1@earthlink.net
www.ndga.net

Join the Stretch Glass Society in Celebrating the Centennial of Stretch Glass



*A century of
handmade stretch
glass in America*

In 1916 nine American glass companies created and introduced iridescent stretch glass to consumers. Production would continue until the mid 1930's and resume in the 1970s when the Fenton Art Glass Company re-introduced iridescent stretch glass and included it in its annual offerings for the next 40 years. Over 1000 distinct items were created, many of which were produced in several of the over 30 colors in which stretch glass was made.

Find us on Facebook or visit www.stretchglassociety.org to register for our 2016 Convention, Show & Sale on July 27-29 in Marietta, OH. You will also find more information about other exhibits and special events planned as the Stretch Glass Society celebrates the 100th anniversary of stretch glass.

TAKE ADVANTAGE OF THE 100TH ANNIVERSARY MEMBERSHIP SPECIAL OF 2 YEARS FOR \$16*.

Join the Stretch Glass Society today at www.stretchglassociety.org



The Stretch Glass Society

Founded April 21, 1974 in Denver, PA.
PO Box 117, Sunbury, Ohio 43074

*Join anytime throughout the year of 2016 and receive an e-membership for \$16. Regardless of when you join in 2016, membership expires on 12/31/17.



20-30-40 Glass Society of Illinois

The Society Page

Bette Wittenberg, Editor

P. O. Box 856

La Grange, IL. 60525

Email: 20-30-40Glassociety@comcast.net

Website: www.20-30-40glassociety.org

Library: www.librarything.com/catalog/20s30s40s

Facebook: www.facebook.com/203040gsfil

FIRST CLASS MAIL

2016

White Fence Farm

June 18th Dinner

4:00 p.m.

TO -

20-30-40 Glass Society of Illinois

Saturday, June 18th

4:00 p.m. Social Hour 5:00 p.m. DINNER

White Fence Farm – Cedar Room

1376 Joliet Road

Romeoville, IL 60446

630-739-1720

MENU

½ Fried Chicken (4 pieces) \$ 22.00 PP # of DINNERS _____ \$ _____

Broiled Boneless Alaskan White Fish \$ 24.00 PP # of DINNERS _____ \$ _____

TOTAL ENCLOSED: \$ _____

All dinners include Kidney Bean Salad, Cole Slaw, Pickled Beets,
Cottage Cheese, Corn Fritters, Baked Potato, Vanilla Ice Cream, Choice of One Beverage.
Luncheons include tax and gratuity.

A cash bar will also be available.

Please make Checks Payable to The 20-30-40 Glass Society and MAIL to:

***Mrs. Bette Bruce
6125 Jackson Court
Woodridge, IL 60517***

Any questions, please call: Jackie Alton phone (773) 561-3516

WE HOPE TO SEE ALL OF YOU AT THE MEETING!!

RESERVATION DEADLINE IS JUNE 6th

Name(s) (Please print)

Phone No. _____

